

# DC3445

E3 / DS3 to HSSI Converter

- Cost-effective leased line interfacing
- HSSI port for router connection
- External Alarm relay port
- Easy to install & maintain
- Built to European Standards
- Rack nest for 2 or 18 units



The DC3445 provides a new level of price/performance in connecting bridges and routers to E3 34.368 Mbps or DS3 44.736 Mbps leased lines.

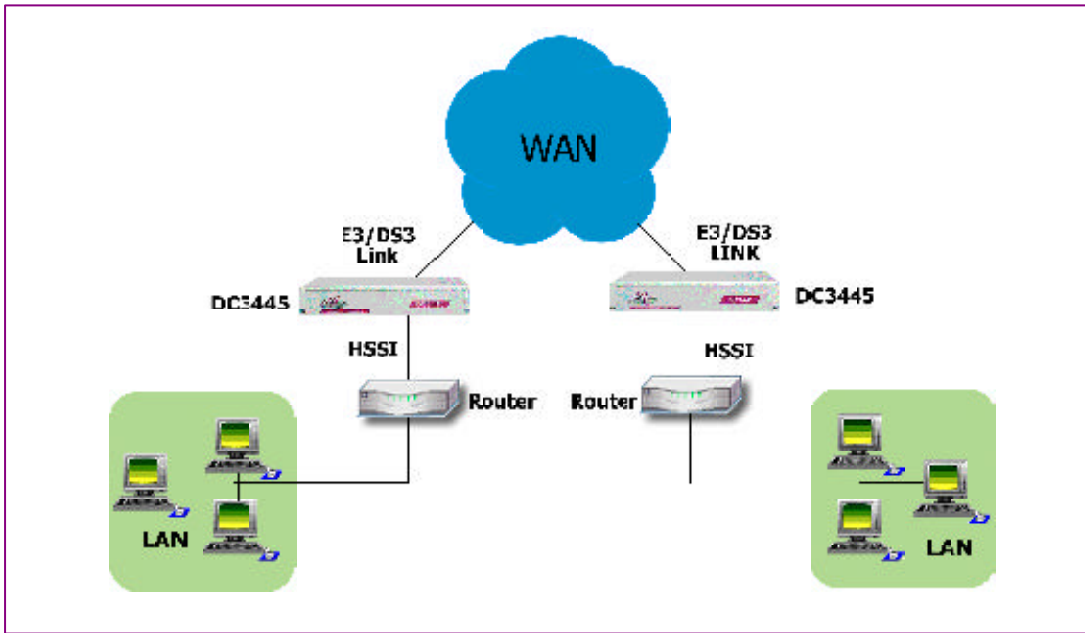
Connecting a LAN bridge or router to a leased line can require a G.703 Interface. The DC3445 spans the gap between the synchronous interface of a bridge or router and an E3 or DS3 leased line. The DC3445 offers a HSSI Interface and BNC connectors for the E3 or DS3 line interface. The DC3445 interface speeds and clocking modes are configured simply by setting the dip-switches. There is a choice of 100-250 VAC and -48 VDC integrated power supplies.

## About Metrodata

Founded in 1989 and based near London's Heathrow airport, Metrodata is a leading designer and manufacturer of datacommunications hardware for Fixed line, Satellite, Enterprise and Carrier networks. Specialising in interoperability and interconnectivity, Metrodata offers a range of Standard, Niche and System Integrated type products. These include Media converters, Interface converters, Fibre converters, Ethernet extenders and ATM switching and Circuit emulation products. Other specialist products manage high data rates and clock sensitive applications to ensure higher network performance. Metrodata provides COTS products to the commercial, government and defence sectors, as well as developing turnkey products to specific customer requirements. For more information and data on Metrodata products, visit our web site at [www.metrodata.co.uk](http://www.metrodata.co.uk)



Application Diagram



DC3445

datasheet

Specifications

Line E3 Interface		Status Display	
Port	G.703, 75 ohm unbalanced,	Type	Status LED on rear panel
Interface	BNC (75 ohm)	Off	Mains power off
Line Coding	HDB3	Flashing green/off	DTE alarm
Bit Rate	34.368 Mbps +/- 20 ppm	Flashing red/off	LOS and DTE alarms
Barrier	Fully barriered per EN41003	Steady green	Unit OK
Cable lengths	RG59 = 150m	Steady red	E3/DS3 WAN port LOS alarm
	UR202 = 180m		
Line DS3 Interface		Power supply	
Port	G.703, 75 ohm unbalanced	AC Mains	100-250 VAC, 50-60 Hz, 45 - 20 mA, 1 EC connector
Line coding	B3ZS	-48VDC Supply	-40 to -72 VDC, 125 - 65 mA
Interface	BNC (75 ohm)	Power Consumption	4.5 watts approx when operating
Bit Rate	44.736 Mbps +/- 20 ppm		
Barrier	Fully barriered per EN41003	Packaging	
Cable lengths	RG59 = 120m	Type	Modem, 1U high without feet
	UR202 = 150m	Dimensions	(W x D x H) mm
DTE Interface		Rackmount	202 x 132 x 44 (without feet)
Port	HSSI	Desktop	202 x 132 x 48 (with feet)
Interface	50-way SCSI 2 connector	Ordering Info	
Bit rate	Same as Line rate	Line Interface	E3 or DS-3 , BNC
Configuration		DTE Interface	HSSI
Clock modes	Internal, Loop, Set by bit-switches	Power supply Part No	
Compliance & Approvals		100-250 VAC Mains	80-05-234
Performance	PD7024 (NTR4)	-48 VDC Supply	80-21-234
Safety	EN41003, EN60950	2 Unit Rackmount kit	
EMC	EN55022, EN50082	100-250 VAC Mains	80-05-252
Environment		-48 VDC Supply	80-05-254
Temp	0 - 50 deg C	Recessed AC or DC	80-05-256
Humidity	95% RH, non-condensing		
Pressure	86-106 KPA		

For more data on Metrodata products, visit our website at [www.metrodata.co.uk](http://www.metrodata.co.uk)  
 Metrodata reserves the right to change specifications without notice.  
 Please check when ordering.

