

DC1200

E1 V.35-G.703 Converter

- Cost Effective E1 G.703 2.048 Mbps Interfacing
- V.35 Port for Router connection
- Easy to install & maintain
- Compact unit
- Built to European Standards
- External alarm relay port



The DC1200 provides a new level of price/performance for connecting bridges and routers to unstructured E1 G.703 2 Mbps leased lines.

A G.703 interface is required to connect a LAN bridge or router to a 2 Mbps leased line. The DC1200 spans the gap between the synchronous interface of a bridge or router and the E1 leased line. The DC1200 offers a V.35 interface and an E1 line interface with BNC or RJ45 connector options.

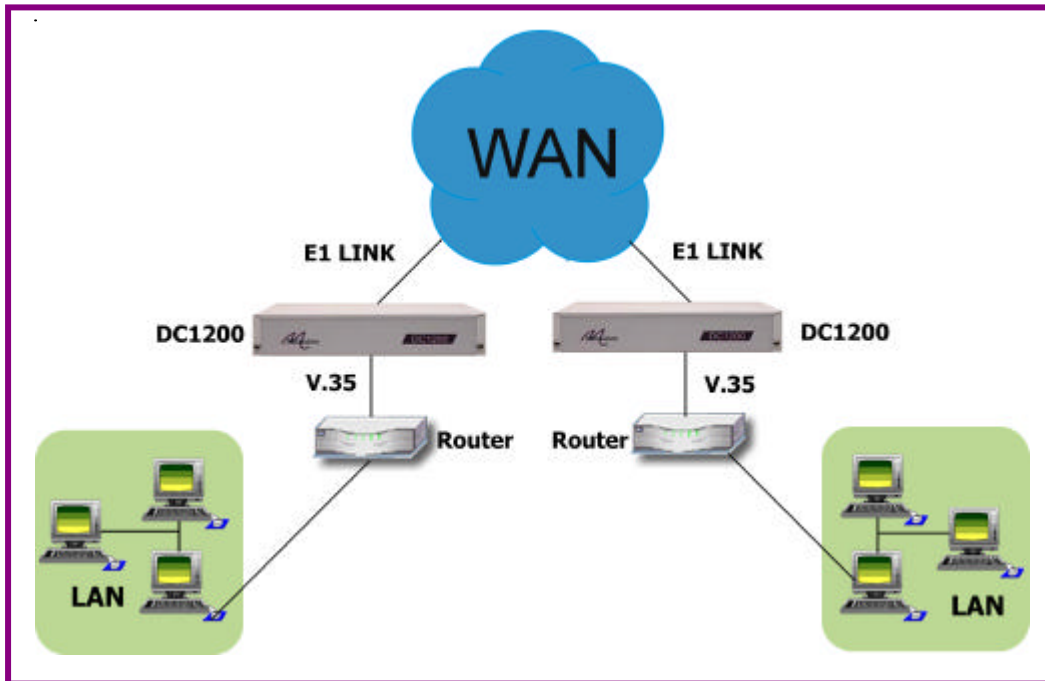
Clocking modes are set by dip-switches which allow the unit to be set up for all applications. There is a choice of integrated power supplies for 100-250 VAC or -48VDC.

About Metrodata

Founded in 1989 and based near London's Heathrow airport, Metrodata is a leading designer and manufacturer of datacommunications hardware for Fixed line, Satellite, Enterprise and Carrier networks. Specialising in interoperability and interconnectivity, Metrodata offers a range of Standard, Niche and System Integrated type products. These include Media converters, Interface converters, Fibre converters, Ethernet extenders and ATM switching and Circuit emulation products. Other specialist products manage high data rates and clock sensitive applications to ensure higher network performance. Metrodata provides COTS products to the commercial, government and defence sectors, as well as developing turnkey products to specific customer requirements. For more information and data on Metrodata products, visit our web site at www.metrodata.co.uk

data sheet DC1200

Application diagram



DC1200

datasheet

Specifications

Line E1 Interface		Power supply	
Port	G.703, 75 ohm unbalanced, 120 ohm balanced	-48VDC Supply	-40 to -72 VDC, 115 - 45 mA
Interface	BNC (75 ohm), RJ45 (120 ohm)	AC Mains	100-250 VAC, 50-400 Hz, 30 - 12 mA, IEC connector
Line Coding	HDB3	Power Consumption	3.5 watts approx when operating
Bit Rate	2.048 Mbps +/- 50 ppm	Packaging	
Barrier	Fully barriered per EN41003	Type	Modem, 1U high without feet
Cable lengths	RG59 = 600m UR202 = 750m	Dimensions	W x Dx H mm
DTE Interface		Rackmount	202 x 132 x 44 (without feet)
Port	V.35	Desktop	202 x 132 x 48 (with feet)
Interface	ISO2593 34-way female M-rack	Ordering Info	
Bit Rate	2.048 Mbps	Line Interface	BNC & RJ45
Configuration		DTE Interface	V.35
Clocks	Internal, E1 Loop, Terminal, DTE mode Set by dip switches	Power supply	Part No
Compliance & Approvals		100-250 VAC Mains	80-05-212
Performance	PD7024 (NTR4)	-48 VDC Supply	80-21-212
Safety	EN41003, EN60950	2 Unit Rackmount kit	
EMC	EN55022, EN50082	100-250 VAC Mains	80-05-252
Environment		-48 VDC Supply	80-05-254
Temp	0 - 50 deg C	Recessed AC or DC	80-05-256
Humidity	95% RH, non-condensing		
Pressure	86-106 KPA		

For more data on Metrodata products and services, visit our website at www.metrodata.co.uk
 Metrodata reserves the right to change specifications without notice.
 Please check when ordering.

