

DC3200

E1 (n* 64K) G.703, G.704
- V.35 Converter



- Cost-effective E1 G.703/G.704 2.048 Mbps Interfacing
- Fractional E1 by allocating n* 64Kbps channels
- V.35 Port for Router connection
- External Alarm relay port
- Easy to install & maintain
- Built to European Standards



DC3200
datasheet

The DC3200 provides a new level of price/performance in connecting switches and routers to a structured E1 G.703/G.704 2.048 Mbps leased line.

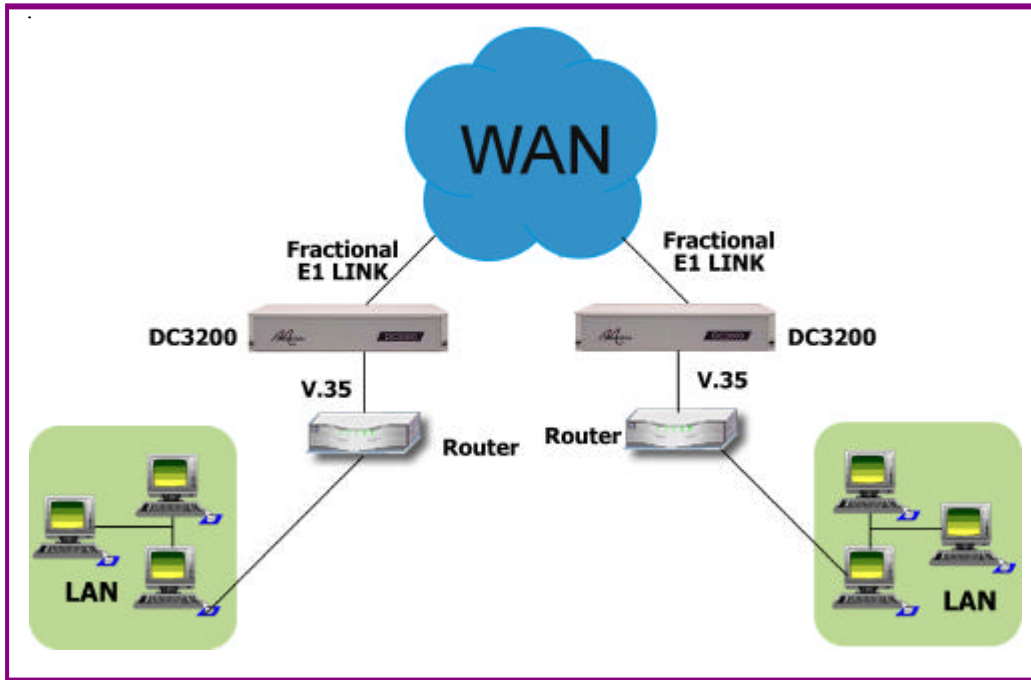
Connecting a LAN bridge or router to a 2 Mbps leased line requires a G.703 Interface. The DC3200 spans the gap between the synchronous interface of a bridge or router and the E1 leased line on a fractional E1 basis of 64Kbps per timeslot. A maximum of 31 timeslots can be configured for a single E1 line. If timeslot 16 is by-passed a maximum of 30 timeslots can be accommodated. The DC3200 offers a V.35 interface and BNC or RJ45 connectors for the E1 Line interface. The DC3200 is configured by setting externally accessible bit-switches. There is a choice of 100-250 VAC or -48 VDC integrated power supplies.

About Metrodata

Metrodata are experts in network connectivity solutions. Based near London Heathrow Airport, we are leading designers and manufacturers of high performance communication hardware for the Fixed line, Satellite, Wireless, Systems integration, Service provision and Corporate networking communities. Metrodata connectivity products provide solutions for interface conversion, interface extension and ATM networking from n*64Kbps through to Sonet/SDH.

Metrodata's sound technical and commercial understanding of international data networking issues ensures that we have the solutions for current and future networking needs. Our continuous development program means that Metrodata solutions are state of the art and provide an economic cost of ownership to our customers.

Application Diagram



DC3200

datasheet

Specifications

Line E1 Interface Port G.703, 75 ohm unbalanced, 120 ohm balanced Interface BNC (75 ohm), RJ45 (120 ohm) Framing G.704 (with or without CRC4) or unframed Line Coding HDB3 Bit Rate 2.048 Mbps +/- 50 ppm Barrier Fully barriered per EN41003 Cable lengths RG59 = 600m UR202 = 750m		Status Display Type Status LED on rear panel Off Mains power off Red Loss of Signal (LOS) Green Unit OK	
DTE Interface Port V.35 Interface ISO2593 34-way female M-rack Bit Rate 2.048 Mbps or n*64Kbps (n = 1 to 31)		Power supply AC Mains 100-250 VAC, 50-60 Hz, 35 - 15 mA, IEC connector -48VDC Supply -40 to -72 VDC, 100 - 50 mA Power Consumption 3.5 watts approx when operating	
Configuration Clocks Internal, E1 Loop, Terminal, DTE mode Set by dip switches Set-up Start timeslot: 1 to 31 Bandwidth: 1 to 31 CRC4: Enable/Disable Timeslot 16 bypass: Enable/Disable		Packaging Type Modem, 1U high without feet Dimensions W x Dx H mm Rackmount 202 x 132 x 44 (without feet) Desktop 202 x 132 x 48 (with feet)	
Compliance & Approvals Performance PD7024 (NTR4) Safety EN41003, EN60950 EMC EN55022, EN50082		Ordering Info Line Interface BNC & RJ45 DTE Interface V.35	
Environment Temp 0 - 50 deg C Humidity 95% RH, non-condensing Pressure 86-106 KPA		Power supply Part No 100-250 VAC Mains 80-05-232 -48 VDC Supply 80-21-232	
		2 Unit Rackmount kit 100-250 VAC Mains 80-05-252 -48 VDC Supply 80-05-254 Recessed AC or DC 80-05-256	

For more data on Metrodata products, visit our website at www.metrodata.co.uk
 Metrodata reserves the right to change specifications without notice.
 Please check when ordering.

