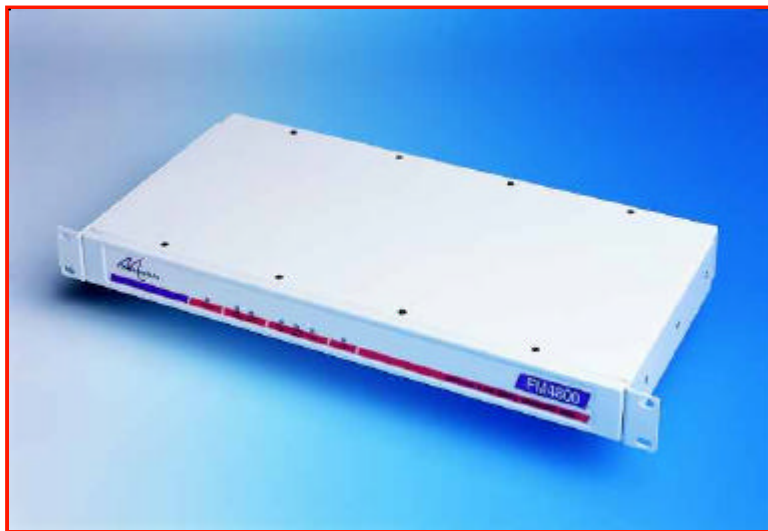


# FM4800

E2 G.703 to X.21 Converter



- High Spec E2 G.703 8.448 Mbps interfacing
- X.21 Data port
- External Alarm relay port
- Remote configuration and testing of units across the network
- Comprehensive performance monitoring of both device and line
- Optional SNMP management
- Optional integrated -48 volt DC supply
- Built to European Standards



datasheet **FM4800**

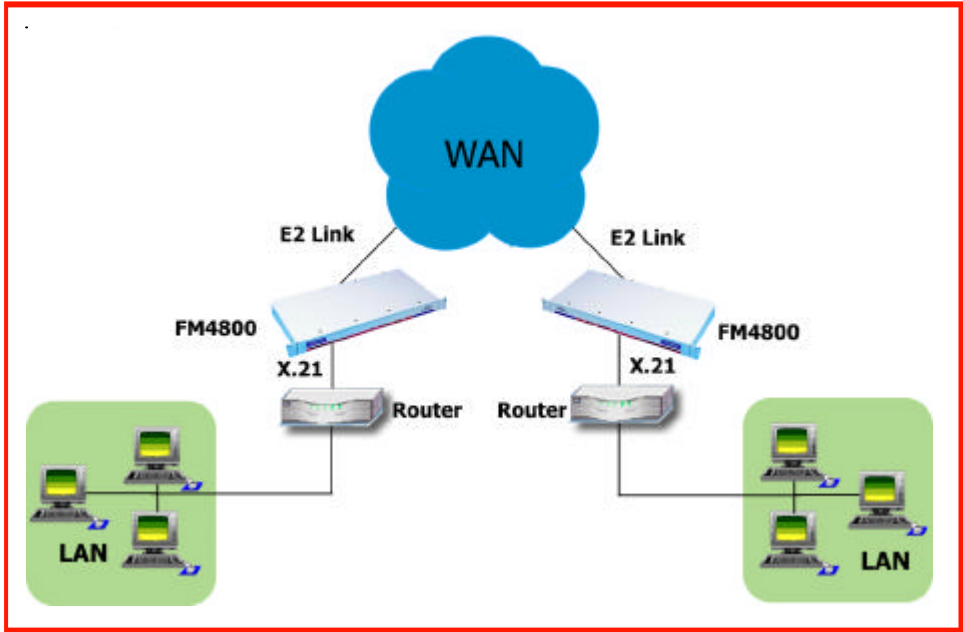
The Metrodata FM4800 DSU is used to interface high performance DTE equipment such as bridges or routers to 8.448 Mbps E2 services. The DTE equipment presents an X.21 interface. FM4800s are used in pairs with one unit at either end of the Wide Area link. Error conditions and usage statistics are gathered and stored by the FM4800. Unit set-up is done via a comprehensive menu system which is accessed via a local or remote terminal. The optional Metrodata LM1100 SNMP Enabler permits management via a LAN using an SNMP system. There is a choice of 100-250 VAC or -48 VDC integrated power supplies.

#### About Metrodata

Founded in 1989 and based near London's Heathrow airport, Metrodata is a leading designer and manufacturer of datacommunications hardware for Fixed line, Satellite, Enterprise and Carrier networks. Specialising in interoperability and interconnectivity, Metrodata offers a range of Standard, Niche and System Integrated type products. These include Media converters, Interface converters, Fibre converters, Ethernet extenders and ATM switching and Circuit emulation products. Other specialist products manage high data rates and clock sensitive applications to ensure higher network performance. Metrodata provides COTS products to the commercial, government and defence sectors, as well as developing turnkey products to specific customer requirements. For more information and data on Metrodata products, visit our web site at [www.metrodata.co.uk](http://www.metrodata.co.uk)

# FM4800

## Application Diagram



datasheet FM4800

### Specifications

Line E2 Interface		Status & Diagnostics	
Port	G.703, 75 ohm unbalanced	Loopbacks	NI Local loop, NI Remote loop, DTE loop
Framing	Unframed	Statistics	Per G.821, 15min, 24 hour totals
Interface	BNC (75 ohm)	BERT	2 <sup>15</sup> -1 PRBS
Line coding	HDB3	Major Alarm	LOS
Bit rate	8.448 Mbps +/- 30ppm	Minor Alarm	AIS
Cable length	E2 BNC RG59 = 300m E2 BNC UR202 = 370m	Data	DTE Tx Data, DTE Rx Data, DTE fault
		Test	Test via menu, Test LED on front panel
DTE Interface		Compliance & Approvals	
Port	X.21	Performance	BS6328, G.703, G.823
Interface	X.21: ISO4903, 15-way D type		BABT# NS /4043 / I / P/ 603917
Bit Rate	8.448 Mbps	Safety	EN41003, EN 60950
Configuration & Management		EMC	EN55022, EN50082
Type	Menu driven	Statistics	G.821, AT&T 54016:15 min, 24hr totals
Access	System console, telnet, SNMP	Management	RFC1213 (MIB II), RFC1495 (telnet), RFC1157 (SNMP), RFC1406 (DS1/E1), MetroDte MIB (DSU), RFC1215 (Traps)
Interface	V.24, Ethernet 10baseT via RJ45	Environment	
Security	Access by 2-level password	Temp	0 - 50 deg C
System	Non-volatile set-up	Humidity	0 - 95% RH, non-condensing
Clock modes	Internal, E2 loop or DTE (CCITT cct 113)	Pressure	86-106 KPA
Power supply		Packaging	
AC Mains	100-250 VAC, 50-400 Hz, 50 mA, IEC	Type	1U, 19 inch rackmount
-48 VDC	-36 to -72 VDC, 100-200 mA	Dimensions	435 x 213 x 44 mm (W x D x H)

FM4800 Part Numbers	AC Mains:100-250 VAC	DC Power: -48 VDC
E2 Line: BNC DTE: X.21	80-05-013	80-21-013
LM1100 SNMP Enabler	14-02-139	14-02-139

For more about Metrodata products, visit our website at [www.metrodata.co.uk](http://www.metrodata.co.uk)  
 Metrodata reserves the right to change specifications without notice.  
 Please check when ordering.

