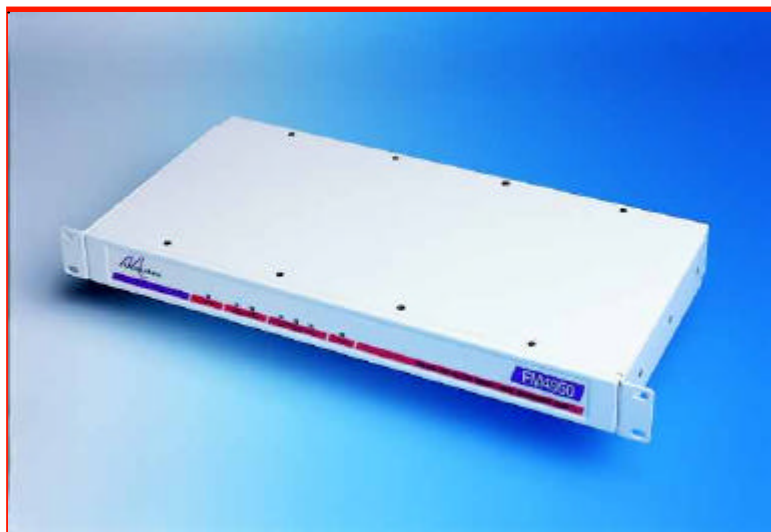


FM4950

DS3 G.703 to HSSI Converter



- High Spec DS3 G.703 44.736 Mbps interfacing
- HSSI Data port
- External Alarm relay port
- Remote configuration and testing of units across the network
- Comprehensive performance monitoring of both device and line
- Optional SNMP management
- Optional integrated -48 volt DC supply
- Built to European Standards



datasheet
FM4950

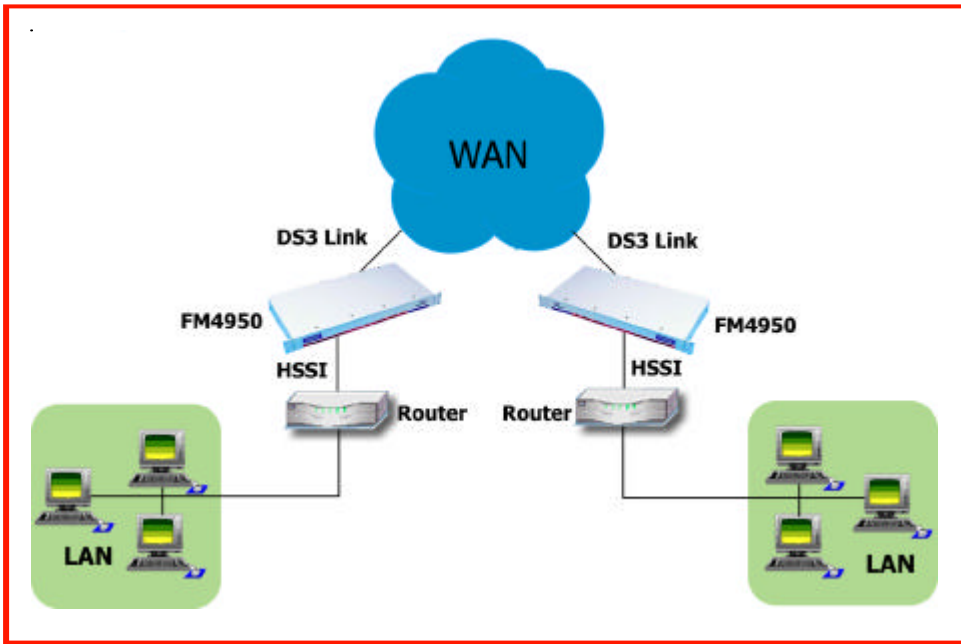
The Metrodata FM4950 DSU is used to interface high performance DTE equipment such as bridges or routers to an unframed 44.736 Mbps DS3 service. The DTE equipment presents an HSSI interface.

FM4950s are used in pairs with one unit at either end of the Wide Area link. Error conditions and usage statistics are gathered and stored by the FM4950. Unit set-up is done via a comprehensive menu system which is accessed from a local or remote terminal. The optional Metrodata LM1100 SNMP Enabler permits management via a LAN using an SNMP system. There is a choice of 100-250 VAC or -48 VDC integrated power supplies.

About Metrodata

Founded in 1989 and based near London's Heathrow airport, Metrodata is a leading designer and manufacturer of datacommunications hardware for Fixed line, Satellite, Enterprise and Carrier networks. Specialising in interoperability and interconnectivity, Metrodata offers a range of Standard, Niche and System Integrated type products. These include Media converters, Interface converters, Fibre converters, Ethernet extenders and ATM switching and Circuit emulation products. Other specialist products manage high data rates and clock sensitive applications to ensure higher network performance. Metrodata provides COTS products to the commercial, government and defence sectors, as well as developing turnkey products to specific customer requirements. For more information and data on Metrodata products, visit our web site at www.metrodata.co.uk





datasheet FM4950

Specifications

Line DS3 Interface		Status LED & Diagnostics	
Port	G.703, 75 ohm unbalanced	Loopbacks	NI Local loop, NI Remote loop, DTE loop, DTE External loop
Framing	Unframed	Statistics	Per G.821, 15min, 24 hour totals
Interface	BNC (75 ohm)	Major Alarm	LOS
Line coding	B3ZS	Minor Alarm	AIS
Bit rate	44.736 Mbps +/- 20ppm	Data	DTE Tx Data, DTE Rx Data, DTE fault
Cable length	DS3 BNC RG59 = 130m DS3 BNC UR202 = 160m	Test	Test via menu, Test LED on front panel
DTE Interface		Compliance & Approvals	
Port	HSSI per EIA 613, EIA 612	Performance	ANSI T1.107, T1.107a
Interface	50-way AMP (SCSI 2 connector)	Safety	UL 459, UL 950, EN41003, EN 60950
Bit Rate	44.736 Mbps	EMC	EN55022, EN50082, FCC Part 15
Configuration & Management		Statistics	G.821, AT&T 54016: 15 min, 24hr totals
Type	Menu driven	Management	RFC1213 (MIB II), RFC1495 (telnet), RFC1157 (SNMP), RFC1407 (DS3/E3) MetroDte MIB (DSU), RFC1215 (Traps)
Access	System console, telnet, SNMP	Environment	
Interface	V.24, Ethernet 10baseT via RJ45	Temp	0 - 50 deg C
Security	Access by 2-level password	Humidity	0 - 95% RH, non-condensing
System	Non-volatile set-up	Pressure	86-106 KPA
Clock modes	Internal, DS3 loop	Packaging	
Power supply		Type	1U, 19 inch rackmount
AC Mains	100-250 VAC, 50-400 Hz, 50 mA, IEC	Dimensions	435 x 213 x 44 mm (W x D x H)
-48 VDC	-36 to -72 VDC, 200-100 mA		

FM4950 Part Numbers	AC Mains:100-250 VAC	DC Power: -48 VDC
Line: DS3 BNC	80-05-018	80-21-018
DTE: HSSI 50-way		
LM1100 SNMP Enabler	14-02-139	14-02-139

For more about Metrodata products, visit our website at www.metrodata.co.uk
 Metrodata reserves the right to change specifications without notice.
 Please check when ordering.

