

# DC2000

E1 G.703 to EIA-530,  
V.35 or X.21 Converter



DC2000

datasheet

- Cost effective E1 G.703 2.048 Mbps interfacing
- EIA-530, V.35 or X.21 port for router connection
- Easy to install & maintain
- Diagnostics give peace of mind
- Built to European Standards



The DC2000 enables the connection of an E1 G.703 2 Mbps leased line to DTE equipment such as a router presenting an EIA-530, V.35 or X.21 interface. Data is carried on the E1 line as unstructured payload.

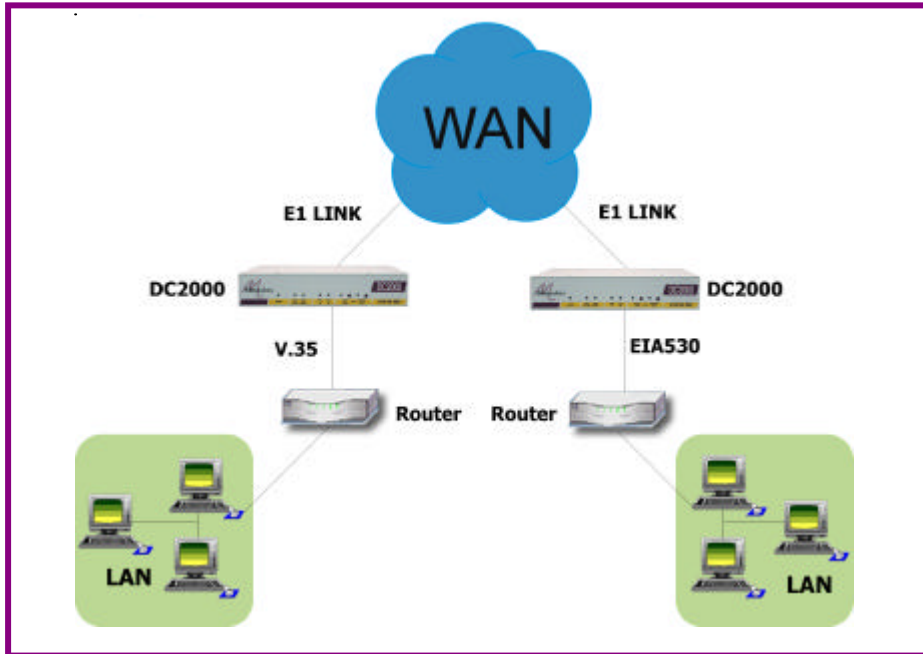
In addition to providing very cost-effective interfacing, the DC2000 provides a test and troubleshooting facility with Remote loop and Local loop test functions as well as a Remotely activated loop test which often eliminates the need for an engineer to visit a remote site for diagnosis of problems. LEDs on the units front fascia panel provide information on the DC2000's operational and test status.

The figure above shows two DC2000 units with front and rear panels visible. AC mains supply is switchable on the rear panel between 240 VAC and 110 VAC. DC models are also available for a supply voltage of -48VDC.

## About Metrodata

Founded in 1989 and based near London's Heathrow airport, Metrodata is a leading designer and manufacturer of datacommunications hardware for Fixed line, Satellite, Enterprise and Carrier networks. Specialising in interoperability and interconnectivity, Metrodata offers a range of Standard, Niche and System Integrated type products. These include Media converters, Interface converters, Fibre converters, Ethernet extenders and ATM switching and Circuit emulation products. Other specialist products manage high data rates and clock sensitive applications to ensure higher network performance. Metrodata provides COTS products to the commercial, government and defence sectors, as well as developing turnkey products to specific customer requirements. For more information and data on Metrodata products, visit our web site at [www.metrodata.co.uk](http://www.metrodata.co.uk)

Application Diagram



DC2000

datasheet

Specifications

Line E1 Interface		Status LED & Diagnostics	
Port	G.703, 75 ohm unbalanced, 120 ohm balanced	Alarms	Major: LOS, Minor: AIS, Mains power on/off
Interface	BNC (75 ohm) RJ45 (120 ohm)	Loopbacks	Local loop, Remote loop, Remotely activated loop
Line Coding	HDB3	Data	Tx data, Rx data
Bit Rate	2.048 Mbps +/- 50 ppm	<b>Power supply</b>	
Barrier	Fully barriered per EN41003	Mains Power 1	220-240 VAC, or by switch 50-400 Hz, 20mA
BNC cable length	RG59 600m UR202 750m	Mains Power 2	110-117VAC, 60 Hz, 40mA
RJ45 cable length	Belden 8132 175m Belden 9841 300m	DC Supply	-40 to -72 VDC, 65- 130 mA
		Power Consumption	4 watts approx when operating
DTE Interface		Packaging	
Port	V.35, EIA-530 or X.21 (RS449 with external cable)	Type	Modem, 1U high without feet
Interface EIA-530	25 way D-type	Dimensions	W x Dx H mm
Interface V.35	ISO2593, 34 way female M-rack	Rackmount	260 x 215 x 44 (without feet)
Interface X.21	ISO4903, 15 way D-type	Desktop	260 x 215 x 48 (with feet)
Interface RS449	X.21 plus external cable	<b>AC models Part Number</b>	
Configuration		E1 BNC/EIA-530	80-05-001
Clocks	Internal, E1 Receive, DTE mode Set by dip-switches	E1 BNC/V.35	80-05-002
		E1 BNC/ X.21	80-05-401
Compliance & Approvals		E1 RJ45 EIA-530	80-05-003
Performance	BNC version: OTR.001 2DS RJ45 version: CTR12, CTR 13, E1 interface: G.703, G.823	E1 RJ45 V.35	80-05-004
Safety	EN41003, EN60950	<b>DC models Part Number</b>	
EMC	EN55022, EN50082	E1 BNC / EIA-530	80-21-001
Environment		E1 BNC/ V.35	80-21-002
Temp	0 - 50 deg C	E1 BNC/ X.21	80-21-401
Humidity	95% RH, non-condensing	E1 RJ45 EIA-530	80-21-003
Pressure	86-106 KPA	E1 RJ45 V.35	80-21-004

For more data on Metrodata products and services, visit our website at [www.metrodata.co.uk](http://www.metrodata.co.uk)  
 Metrodata reserves the right to change specifications without notice.  
 Please check when ordering

