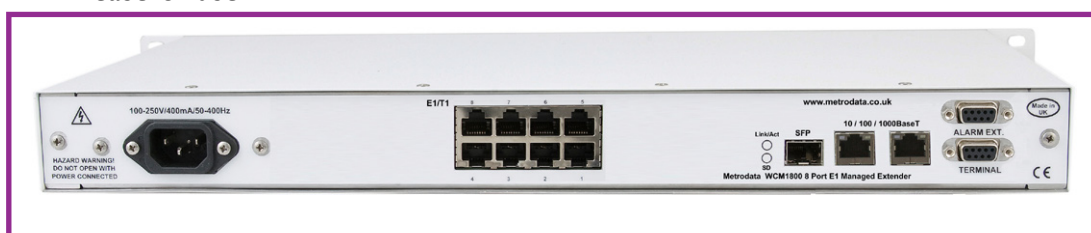


- LAN extension over up to 8x Clear-Channel or Fractional EI/TI services
- Dual RJ45 plus SFP flexible media port, offering local Switched Ethernet connections up to 1Gbps
- Link state forwarding
- Jumbo Frame Support (10kbyte)
- 802.3ah OAM Support, with IP proxy over OAM mode
- 802.1q VLAN support (pass-through and tag switching)
- 802.1p priority queuing (4 queues)
- RSTP Support
- SSH & TACACS+ for secure authentication
- Telnet & SNMP Management (Local & Remote)
- Extensive Statistics & Performance monitoring
- Integral auto-sensing AC (110V-250V) or -48VDC PSUs
- 'Zero-touch' installation facility with advanced IP proxy management option for ease-of-use



WCM1800 Managed LAN Extender over up to 8x EI/TI circuit

The WCM1800 is a member of the MetroCONNECT family, offering Managed local Ethernet Switching at up to 1Gbps and LAN extension over up to 8 off Clear-Channel or Fractional EI / TI wide area links using VCAT. The WCM1800 supports auto negotiation and auto MDI/MDI-X crossover switching on two RJ45 LAN interfaces. A further LAN interface is provided via an SFP port, offering either an additional RJ45 connection or a variety of multi-mode and single-mode fibre interface options.

To ensure reliable operation, the WCM1800 supports LCAS whereby EI/TI links are automatically added and withdrawn from the VCAT group based on availability. Link State Forwarding is supported, whereby faults on ALL uplink ports will automatically force a link down on the user ports to indicate to the attached devices that there is a link problem. The transmission of Jumbo frames is supported, with internal packet buffering used to smooth out bursty traffic without packet loss.

Ethernet Link OAM (802.3ah) is supported, enabling the Ethernet service to be managed and monitored right up to the customer delivery point. Forthcoming software developments will add support for LACP, 802.1ag and Y.1731 OAM standards.

In line with all other members of the MetroCONNECT Ethernet Service Delivery family, the WCM1800 supports Metrodata's 'zero-touch' installation process, minimising both on-site installation time and the Engineering skills required. Our unique 'IP proxy over OAM' functionality reduces on-site installation to a 'plug and play' exercise, simply checking that Ethernet link-up LEDs indicate correct physical connectivity. Comprehensive Telnet and/or SNMP remote management is available to the device via an IP proxy process across Layer-2 OAM traffic from an MC12000 Service Delivery chassis or another MetroCONNECT family device at the network centre, with no need for layer-3 (IP) parameters to be assigned locally. If required, individual configuration can be subsequently downloaded via TFTP.

Management is offered using OAM, SNMP or Telnet, either locally via any of the available subscriber ports or remotely over a WAN connection. With VLAN support enabled, management access is enabled individually on a per port basis to provide secure access to the unit.

The WCM1800 supports VLAN in two ways. In normal mode, VLAN tagged frames are passed unmodified; however when VLAN support is enabled, the WCM1800 supports VLAN tag-based switching whereby access may be controlled using VLAN IDs. The unit is password protected for Telnet access for security, and for SNMP is configured with a primary and multiple back-up NMS stations. SNMP access will only be accepted from an authorised NMS.

VLANs can also be used to select which site to forward user data to using up to 4 VCAT groups, e.g. when using a WCM1800 unit supporting eight EI ports at a central site with four WCM1100 or WCM1400 units each supporting up to four EI ports at four remote sites.

Compatibility:

GFP mode for use with LAN Extension Aggregation equipment.

Specifications

WCM1800 Subscriber Port Specs		WCM1800 WAN Port Specs	
Port	2x 10/100/1000baseT port with auto-negotiation and Jumbo frame support	Mode	8 ports of EI or TI
Interface	RJ45 (Auto Crossover MDI/MDIX)	Presentation	EI 120 ohm RJ45, TI 100 ohm RJ45
Operating modes	Auto Negotiate, 10M, 100M, 1000M Full Duplex, Half Duplex	Line Rate	EI 2.048 Mbps, TI 1.544 Mbps
LEDs	Link Activity, Speed	Timing	Internal or loop
1000Base-X Fibre Interface		Encapsulation	HDLC, GFP G.8040 LCAS G.7042, VCAT G.7043
Port	IEEE802.3z 1000Base-X SFP	Compliance & Approvals	
Interface	Dual LC	Safety	EN60950, IEC-60825-1 (Class I Laser Eye Safety)
SFP 1000Base SX		EMC	EN55022, EN50082
Wavelength	850nm Multimode	Environment	
Max Rx input power	0 dBm	Temp	0 to 50 deg C
Rx sensitivity	-17 to 0 dBm	Humidity	0 - 95% RH, non condensing
Optical loss budget	7.5dB (550m)	Pressure	86 - 100 KPa
Tx power	-9.5 to -3 dBm	Storage Temp	-40 to 100 deg C
SFP 1000Base LX		Power supply	
Wavelength	1300nm Singlemode	-48VDC	-36 to -72VDC, 125 - 65mA
Max Rx input power	0 dBm	AC Mains	100 - 250 VAC 50 - 60 Hz, 60 - 25mA
Rx sensitivity	-17 to 0 dBm	Power consumption	20 watts approx when operating
Optical Loss budget	9.5dB (10km)	Packaging	
Tx power	-9.5 to -3 dBm	Type	1U 19 inch rackmount
		Dimensions	435 x 213 x 44 (W x D x H)

Order codes

Product	100 - 250 VAC	-48 VDC
WCM1800	80-70-8542	80-71-8542
SFP 1000baseSX	80-31-011	80-31-011
SFP 1000baseLX	80-31-031	80-31-031