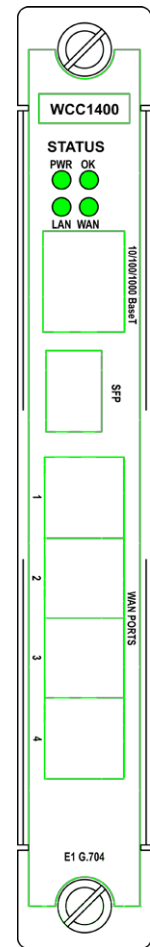
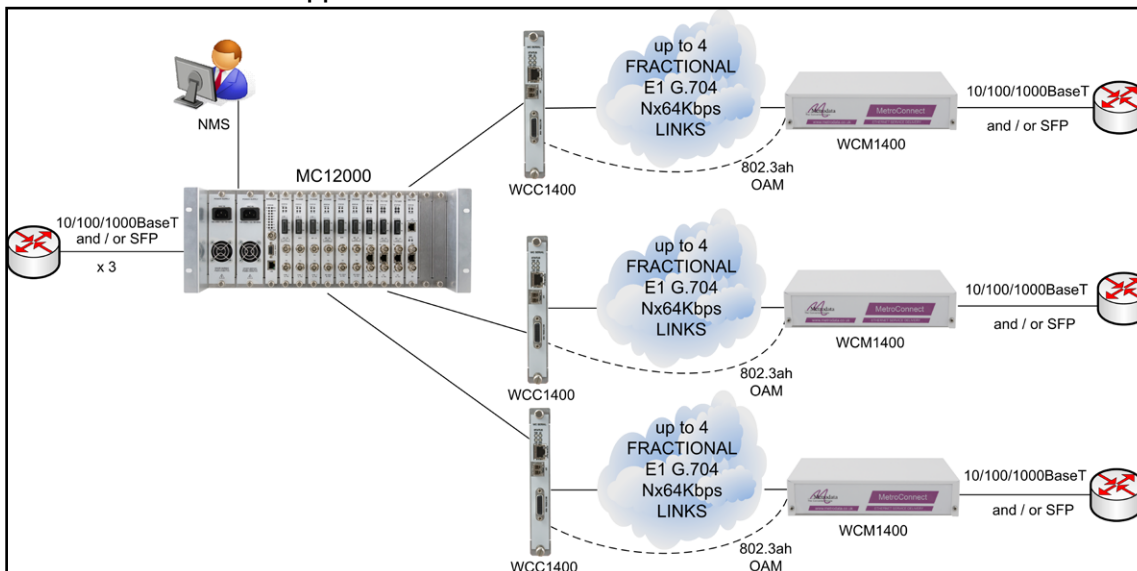


MetroCONNECT WCCI400

Managed LAN Extender over up to 4-port EI/TI Module

- LAN extension over 4-port Clear-Channel or Fractional EI/TI services
- 10/100/1000BaseT Copper Port
- SFP socket supporting:
 - 1000Base-X
 - 100Base-FX
- “Hot Swap” IO Module
- Link State Forwarding
- Jumbo Frame Support (10kbyte)
- 802.3ah OAM support
- 802.1q VLAN support (pass-through and tag switching)
- 802.1p priority queuing (4 queues)
- RSTP Support



datasheet **WCCI400 Module**

The WCCI400 is an I/O module for use in the MetroCONNECT MC12000 system. The WCCI400 occupies a single slot in the MC12000 chassis and is fully “Hot Swap” compliant to ease maintenance and the provisioning of new services.

The WCCI400 module can be used for Ethernet Service Provision, offering LAN extension over up to 4 off Clear-Channel or Fractional EI/TI services using VCAT. The WCCI400 supports auto-negotiation, and auto MDI/MDIX cross-over switching on the copper LAN interface. A further LAN interface is provided via an SFP port, offering either an additional RJ45 connection or a variety of multi-mode and single-mode fibre interface options. This port auto-senses the SFP type inserted, and configures for 100BaseFx or 1000Base-X operation.

To ensure reliable operation, the WCCI400 supports LCAS whereby EI/TI links are automatically added and withdrawn from the VCAT group based on availability. Link State Forwarding is supported, whereby faults on ALL uplink ports will automatically force a link down on the user ports to indicate to the attached devices that there is a link problem. The transmission of Jumbo frames is supported, with internal packet buffering used to smooth out bursty traffic without packet loss.

MetroCONNECT WCCI400

Managed LAN Extender over up to 4-port EI/TI Module

Remote management can be performed using Ethernet OAM, SNMP or Telnet, in conjunction with the Management Module of the MCI2000 system.

The WCCI400 supports VLAN in two ways. In normal mode, VLAN tagged frames are passed unmodified; however when VLAN support is enabled, the WCCI400 supports VLAN tag-based switching whereby access may be controlled using VLAN IDs.

VLANs can also be used to select which site to forward user data to, e.g. when using a WCCI400 unit supporting four EI ports at a central site with four WCM1100 units each supporting a single EI port at four remote sites.

Specifications

WCCI400 Subscriber Port Specs		WCCI400 WAN Port Specs	
Port	10/100/1000baseT with auto-negotiation and Jumbo frame support	Mode	4 ports of EI or TI
Interface	RJ45 (Auto Crossover MDI/MDIX)	Presentation	EI 120 ohm RJ45, TI 100 ohm RJ45
Operating modes	Auto Negotiate, 10M, 100M, 1000M Full Duplex, Half Duplex	Line Rate	EI 2.048 Mbps, TI 1.544 Mbps
LEDs	Link Activity, Speed	Timing	Internal or loop
1000Base-X Fibre Interface		Encapsulation	HDLC, GFP G.8040 LCAS G.7042, VCAT G.7043
SFP Port	IEEE802.3z 1000Base-X	Compliance & Approvals	
Interface	Dual LC	Safety	EN60950, IEC-60825-I (Class I Laser Eye Safety)
SFP 1000Base SX		EMC	EN55022, EN50082
Wavelength	850nm Multimode	Environment	
Max Rx input power	0 dBm	Temp	0 to 50 deg C
Rx sensitivity	-17 to 0 dBm	Humidity	0 - 95% RH, non condensing
Optical loss budget	7.5dB (550m)	Pressure	86 - 100 KPa
Tx power	-9.5 to -3 dBm	Storage Temp	-40 to 100 deg C
SFP 1000Base LX			
Wavelength	1300nm Singlemode		
Max Rx input power	0 dBm		
Rx sensitivity	-17 to 0 dBm		
Optical Loss budget	9.5dB (10km)		
Tx power	-9.5 to -3 dBm		

Order codes

Product	Model Number
WCCI400	80-16-4542
1000BaseSX SFP	80-31-011
1000BaseLX SFP	80-31-031