



PSINet build for the Internet future choosing Metrodata FM4800 and FM4850 for their performance, speed and reliability.

Founded in 1989 Metrodata are leading designers, manufacturers and suppliers of high performance multimedia voice and data systems. Providing the connection between local and wide area networks, Metrodata have established an enviable worldwide reputation in this high speed market.

Based near Heathrow Airport, Metrodata is British company with a European focus. Its relentless determination to keep at the forefront of the data and telecommunications industry had made it one of the fastest growing telecoms companies in the UK.



The FM4800, along with the FM4850 is the equipment choice for PSINet.

PSINet is the world leader in corporate Internet services and has a state of the art global data communications network. Also founded in 1989, PSINet was the first, and is now the largest independent commercial Internet Service Provider in the world.

With an extremely flexible network built specifically for Internet applications, PSINet is one of the few true Global ISP's. PSINet provides Internet solutions to over 66,000 business accounts worldwide and delivering quality of service is paramount, particularly on high speed leased lines delivering Internet connections and hosted web servers.

Based in Cambridge and London in the UK, PSINet are utilising Metrodata's wide portfolio of E2 8Mbit/s products at the edge of their network.

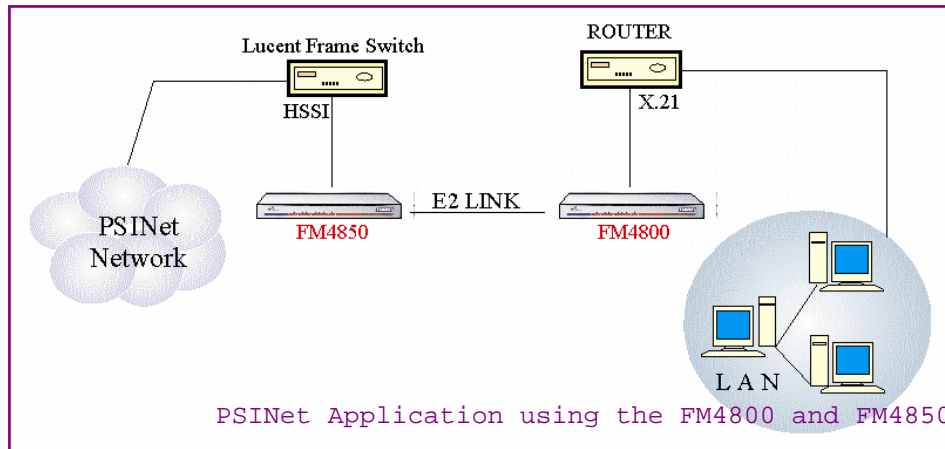
In the past 2Mbit/s was regarded as the de facto speed for Corporates to connect to the Internet. PSINet are able now to deliver 8Mbit/s Internet Connectivity to customers requiring higher speeds. Utilising HSSI as the delivery mechanism in the network means that PSINet can ensure easy network growth for their customer with dramatically reduced long term costs.

case study



The FM4850 provides E2 connectivity to a HSSI (High Speed Serial Interface) port on the PSINet Lucent switch. A HSSI interface on the Lucent equipment offers the customer the advantage of a simple upgrade to an E3 service (via a Metrodata FM4900). The FM4850 then connects to an E2 8Mbit/s leased line. This leased line is terminated at the Customer site

and converted from the standard telco BNC delivery to an X.21 delivery using the FM4800. Use of X.21 by the Customer allows them to reduce cost without losing any performance. As the speed of Internet connectivity grows, they can upgrade to HSSI at either end of the line for even greater flexibility, giving an upgrade path from 2Mbit/s to 52Mbit/s.



The FM4800 and FM4850 features:

- ◆ High Spec E2 G.703 8Mbit/s interfacing
- ◆ X.21 DTE Port or HSSI Port
- ◆ Remote testing of units across the network
- ◆ User friendly menus - easy to install and configure
- ◆ Comprehensive performance monitoring and diagnostics
- ◆ Optional SNMP remote management
- ◆ Built to European Standards

"With 10 years experience designing and manufacturing E2 8Mbit/s hardware, Metrodata were an obvious choice. The kit is reliable and easy to install."

Nathan Giles
Technical Services Manager,
PSINet UK Ltd

"Quality of service to our customers is key, and Metrodata's products allow PSINet to offer higher speed connectivity and ensure network growth"

Helen Fordham,
Head of Marketing
PSINet UK Ltd



 case study

