

DC1000

E1 X.21-G.703 Converter

- Cost Effective E1 G.703 2.048 Mbps Interfacing
- X.21 Port for Router connection
- External Alarm relay port
- Easy to install & maintain
- Compact unit
- Built to European Standards



DC1000
datasheet

The DC1000 provides a new level of price/performance for connecting bridges and routers to unstructured E1 G.703 2 Mbps leased lines.

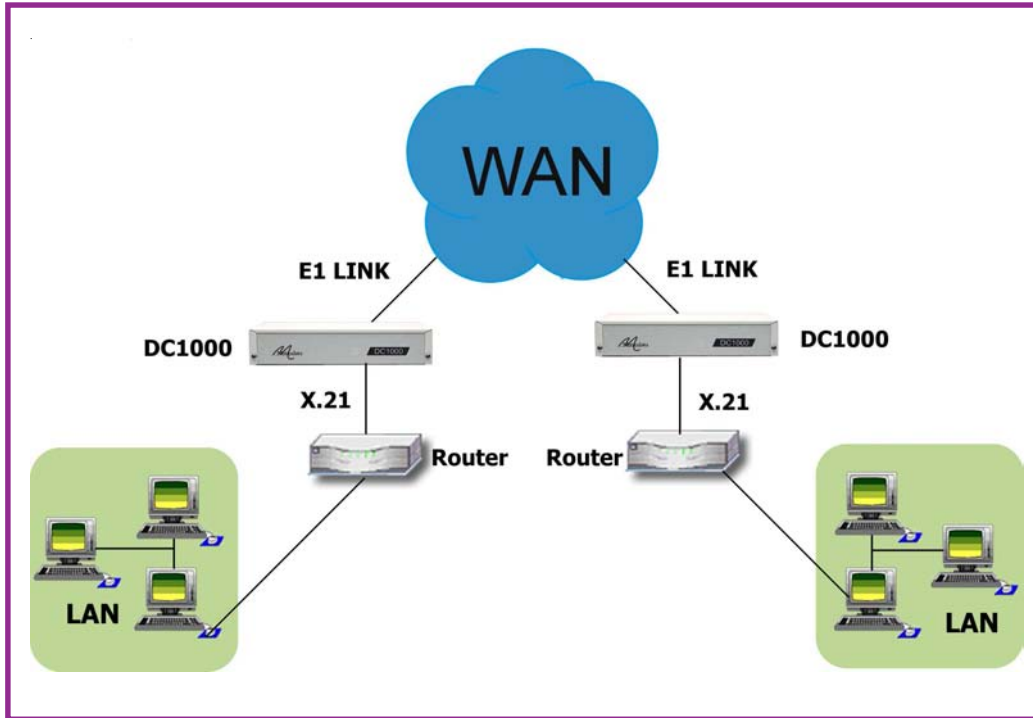
A G.703 interface is required to connect a LAN bridge or router to a 2 Mbps leased line. The DC1000 spans the gap between the synchronous interface of a bridge or router and the E1 leased line. The DC1000 offers an X.21 interface and an E1 line interface with BNC or RJ45 connector options.

Clocking modes are set by bit-switches which allow the unit to be set up for all applications. There is a choice of 100-250 VAC or -48 VDC integral power supplies.

About Metrodata

Founded in 1989 and based near London's Heathrow airport, Metrodata is a leading designer and manufacturer of datacommunications hardware for Fixed line, Satellite, Enterprise and Carrier networks. Specialising in interoperability and interconnectivity, Metrodata offers a range of Standard, Niche and System Integrated type products. These include Media converters, Interface converters, Fibre converters, Ethernet extenders and ATM switching and Circuit emulation products. Other specialist products manage high data rates and clock sensitive applications to ensure higher network performance. Metrodata provides COTS products to the commercial, government and defence sectors, as well as developing turnkey products to specific customer requirements. For more information and data on Metrodata products, visit our web site at www.metrodata.co.uk

Application diagram



DC1000

datasheet

Specifications

Line E1 Interface		Environment	
Port	G.703, 75 ohm unbalanced, 120 ohm balanced	Temp	0 - 50 deg C
Interface	BNC (75 ohm), RJ45 (120 ohm)	Humidity	95% RH, non-condensing
Line Coding	HDB3	Pressure	86-106 KPA
Bit Rate	2.048 Mbps +/- 50 ppm	Power supply	
Barrier	Fully barriered per EN41003	AC Mains	100-250 VAC, 50-400 Hz, 30-12 mA, IEC connector
Cable lengths	RG59 = 600m UR202 = 750m	-48VDC Supply	-40 to -72 VDC, 115-45 mA
		Power Consumption	3 watts approx when operating
DTE Interface		Packaging	
Port	X.21	Type	Modem, 1U high without feet
Interface	15-way female D-type	Dimensions	W x Dx H mm
Bit Rate	2.048 Mbps	Rackmount	202 x 132 x 44 (without feet)
		Desktop	202 x 132 x 48 (with feet)
Configuration		Power supply	
Clocks	Internal, E1 Loop, Terminal, DTE mode Set by dip switches	DC1000 Part No	
		100-250 VAC Mains	80-05-210
		-48 VDC Supply	80-21-210
Compliance & Approvals		Rackmount kits	
Performance	OTR.001	Model No	
Safety	EN41003, EN60950	1U 2 unit AC or DC	80-05-256
EMC	EN55022, EN50082	6U 18 unit AC mains	80-05-250
		6U 18 unit DC supply	80-05-255

For more data on Metrodata products and services, visit our website at www.metrodata.co.uk
 Metrodata reserves the right to change specifications without notice.
 Please check when ordering.

