

Metrodata Join Ericsson Partnership Programme

Founded in 1989 Metrodata are leading designers, manufacturers and suppliers of high performance multimedia voice and data systems. Providing the connection between local and wide area networks, Metrodata have established an enviable worldwide reputation in this high speed market.

Based near Heathrow Airport, Metrodata is a UK company with a European focus. It's relentless determination to keep at the forefront of the data and telecommunications industry has made it one of the fastest growing telecoms companies in the UK.



Ericsson is one of the world singular leaders in PBX technology and their MD110 PBX platform is at the leading edge of the market.

The Partner programme is designed to help Ericsson react rapidly to their Customer and market requirements by establishing business links with leaders in the different fields of communications and services. The Companies benefit by having direct links into the Ericsson organisation.

Based at Nacka Strand in Stockholm, Ericsson's Computer Telephony Integration laboratories are looking at ways of converging the PBX and the LAN so they can cost effectively deliver voice and data solutions.

The first product that has been successfully tested is the FM4500. This is a Carrier Class, Voice and Data, Time Division Multiplexer. Metrodata also manufacture another version of the FM4500, called the FM4200, which has only one X.21 or V.35 port

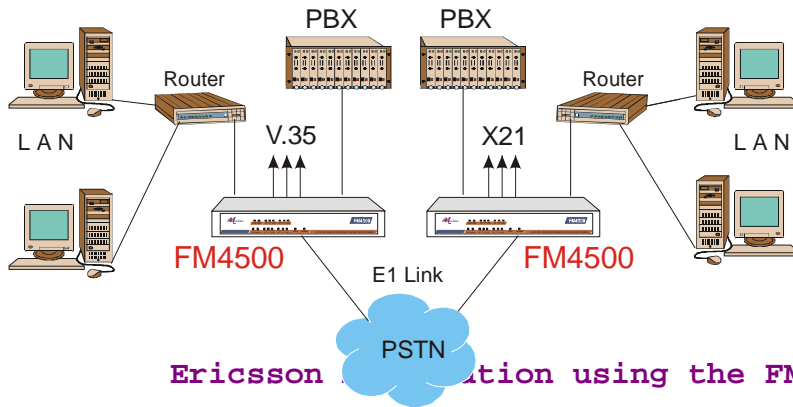

case study

The FM4200 and FM4500 allow Voice and Data to be combined on a single leased line and total flexibility of bandwidth to PBX and data ports. Other products in the pipeline for testing include the Metrodata ATM DSU's, and the new Access Processor AP3000.

The **FM4500** is a fractional E1 add and drop Multiplexer. It's primarily used to connect PBX's, Routers and other data devices together across a single E1 Leased Line.

It has G.703 input and a G.703 output port, as well as four V.35 or X.21 local data ports. The input port takes an E1 or n x 64Kbps input within a G.704 frame.

The FM4500 can also be used to split an E1 into smaller bandwidths and these can be channeled from the data ports to routers for local offices. The data ports can also be used to connect remote offices via 64k leased lines



The FM4500 features:

- ◆ High Specification E1 G.703 2.048 Mbit/s interfacing
- ◆ 4 DTE Data Port and 4 E1 DTE Drop Port
- ◆ Mix Voice and Data on the same line
- ◆ Remote configuration & testing of units across the network
- ◆ Comprehensive performance monitoring and diagnostics
- ◆ Optional SNMP remote management
- ◆ Built to European Standards

"As one of the most reputable manufacturers in the world it is important for Ericsson that our Partners are of the highest calibre."

Comprehensive testing of the FM4500 with our Ericsson MD110 PBX proved that Metrodata manufacture and operate as a company to the highest standards"

**Karl-Erik Ulfves,
Product Marketing Manager
MD110, Ericsson**

To find out about Metrodata products and services visit our website www.metrodata.co.uk or ring us on +44 (0)1784

case study

